

Corporate Profile



Food links into the future

We support safe and secure dietary habits through feed.



President

**MIYAUCHI
KAZUHIRO**

The demand for compound feed is expected to continue growing due to the economic development of Asian countries and the increase in the global population. Since Japan relies on foreign countries for most of the ingredients for its compound feed, securing stable ingredient supplies is essential to protect the domestic livestock and fishery industries. We aim to respond flexibly to these and other developments in the international environment, with all employees sharing their opinions on what needs to be done to meet the needs of our customers and find the best solutions.

Additionally, consumers' awareness of food is expected to continue increasing. We are committed to delivering high-quality products that meet these consumer needs and will work as an entire company to support the further development of the domestic livestock and fishery industries.

Our Vision

We are dedicated to ensuring food safety and making a meaningful contribution to society as a trusted company.



Management philosophy

As a company responsible for a part of food culture, Marubeni Nisshin Feed thoroughly follows compliance with all laws and regulations and contributes to 'guaranteeing the safety of food products' while producing and selling safe, secure, and high-quality feed and related products. Additionally, by prospering together with our customers through the pursuit of economic rationality and the provision of services, we maintain a persistent growth mindset and 'contribute to society' as a highly trusted company.

Management vision

We address challenges in the food sector to help create a sustainable and thriving society. By focusing on environmental, social, and governance (ESG) priorities, we continuously grow through innovation—improving production technologies, developing new products, entering new markets, securing new resources, and reforming our organizational structures and systems.

Important management issues

- Thorough field-oriented policy
- Provision of products and services that meet customer needs through the seamless integration of production, sales, technology, and management
- Pursuit of corporate sustainability through ESG-driven management
- Thorough compliance

Important social issues

- Sustainable development of the livestock and aquaculture industries
- Maintaining the production of safe and secure food
- Contributing to global environmental protection and the creation of a sustainable society

We will continue to strengthen food links for the future and contribute to building a sustainable and prosperous society.



Sustainability Policy

Through efforts addressing key sustainability challenges (materiality), we aim to enhance sustainable corporate value while earning the trust of our diverse stakeholders, including business partners, shareholders, employees, and the global environment. As a trusted company, we will further develop our livestock and aquaculture feed businesses and work to shape the future of food.



Sustainability



Materiality

Resource utilization with a focus on the circular economy

We are addressing environmental issues through initiatives such as crop-livestock integration, feed resource recycling, climate change measures, and the conservation of natural marine resources.



Smart livestock farming through feeding management systems

Utilization of IoT in farm operations

To enhance operational efficiency on farms, we are promoting smart livestock farming through initiatives such as visualizing feed tank levels and introducing feeding management systems.



Corn cultivation trials using chicken manure compost

Crop-livestock integration

We are developing a system for crop-livestock integration, transforming livestock manure into high-value compost, which is then used to produce grains for feed ingredients.



Solar panels installed at Kashima feed mill

Initiatives for reducing CO₂ emissions and conserving energy

We have set a goal of achieving zero CO₂ emissions by 2050 and are working toward it by installing solar panels and reducing waste at production sites.



Fisheries and Aquaculture Research Laboratory

Conservation of marine resources

To achieve sustainable aquaculture, we are developing low-fishmeal feeds that reduce reliance on fishmeal by utilizing animal-based ingredients and next-generation protein sources.

Initiatives to enrich people's lives



We aim to create a workplace environment that supports work-life balance by enhancing employee benefits and training programs. Additionally, we contribute to people's dietary habits by conducting food education activities for students who will shape the future of food.

Corporate governance initiatives

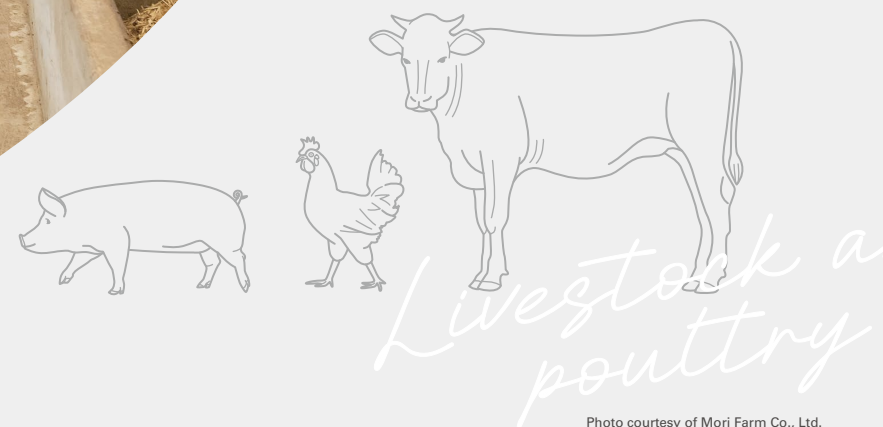


We adhere to laws, regulations, and internal policies while conducting business activities in line with corporate ethics. Additionally, we have established a Compliance Committee to ensure proper compliance practices.

lity

Livestock and poultry feed business

We design optimal feed for each livestock species and are committed to producing safe and secure feed. After supplying feed to farms, we work with our customers to address challenges and develop feeding methods to achieve their production goals.





Our Products

Cattle feed

Based on our unique manufacturing technologies and the latest nutritional knowledge, we offer a wide range of products tailored to the breed and region of beef cattle, meeting both productivity and economic needs.



Swine feed

Our swine feed products help raising piglets efficiently and producing high-quality red meat for the market. Taking into account the nutritional needs at each growth stage, we offer a wide range of products to meet customer requirements.



Layer feed

We provide efficient feed designed to maximize the performance of each breed in line with its genetic improvements, enabling the production of high-quality eggs that consumers can trust.



Broiler feed

To improve productivity for broiler integration companies, we offer compound feed that maximizes the characteristics of each chicken breed, taking into account the genetic trend of the breed (Chunky breed). We also provide support for feeding management on production sites, aiming to enhance production efficiency.



Our Businesses

Farm support

Our sales representatives, with expertise in each livestock species, visit farms to offer advice on feeding methods and help improve farm performance. With a thoroughly field-oriented approach, we create and propose feeding management manuals tailored to the farm environment and management conditions. We work quickly to address challenges and focus on enhancing productivity and reducing costs for our customers.

Feeding management support

×

feed analysis

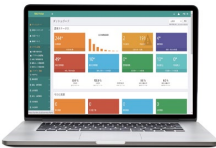
×

business consulting

MN-Porker



To ease the burden on on-site producers, we developed MN-Porker, an online swine management support system. Smart farming helps drive sustainable livestock production.



Breeding swine business

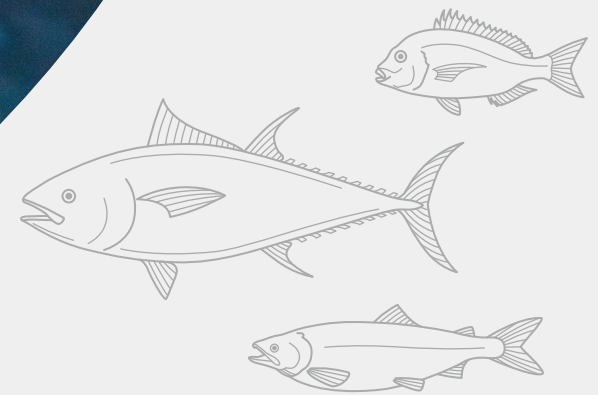
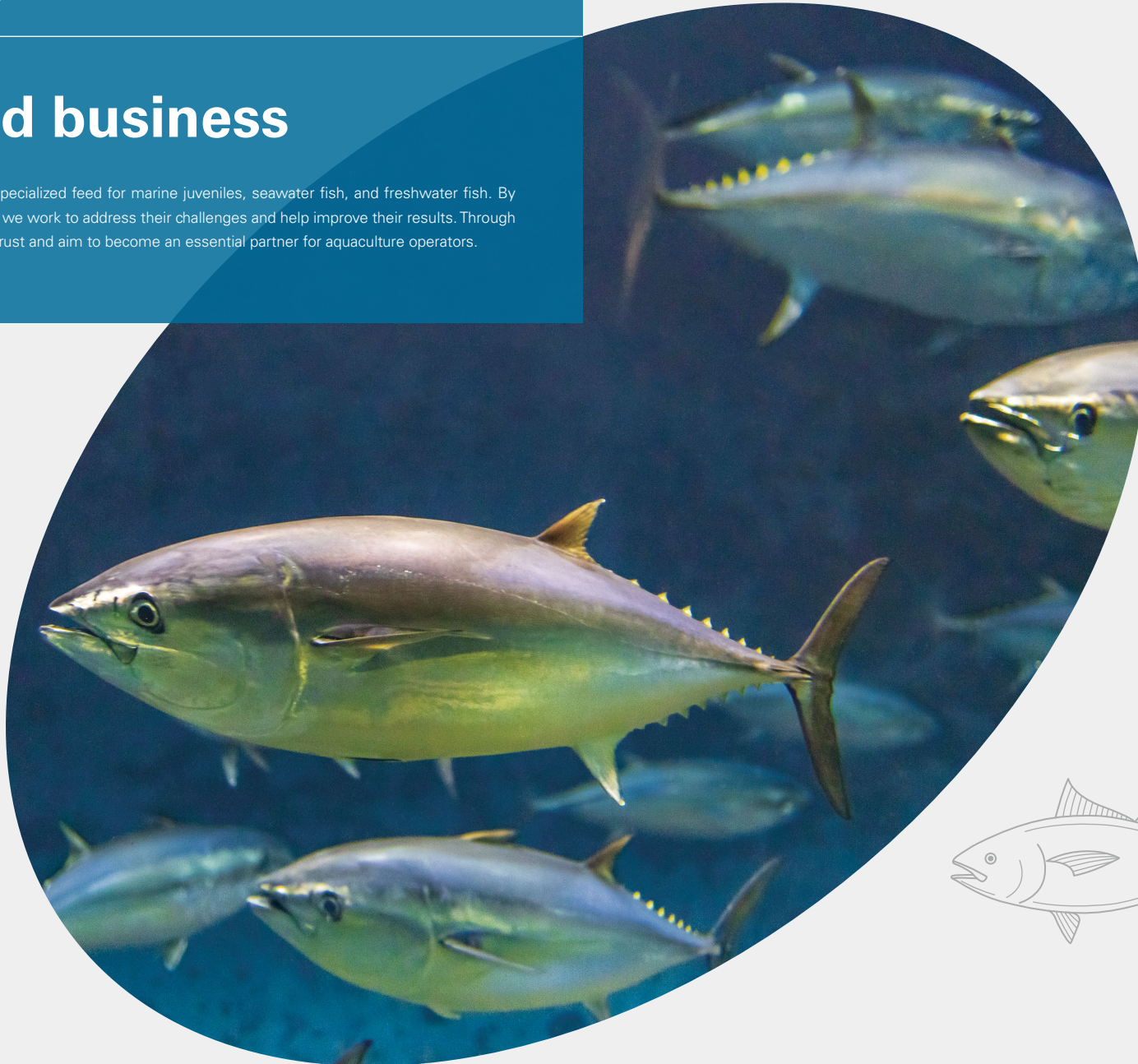
As the general agent for PIQUA high-performance sows we contribute to the business of swine producers through our breeding swine operations. PIQUA sows display superior breeding capability, their progenies show good growth, and they are expected to deliver carcasses of stable quality. PIQUA sows are robust with good longevity and superior feed conversion, while being of mild temperament. Production is handled by our affiliated company Piqua Genetics Co., Ltd.



and feed

Aquafeed business

We produce a wide variety of specialized feed for marine juveniles, seawater fish, and freshwater fish. By visiting our customers regularly, we work to address their challenges and help improve their results. Through our daily interactions, we build trust and aim to become an essential partner for aquaculture operators.



Aqua



Our Products

Larval fish feed - Otohime Series

This feed for larval fish is known for its high palatability and special form that minimizes water contamination. It is widely used and highly praised in seedling production facilities and research institutions across the country. The pellets and EP, made using carefully selected raw materials and granulation technology that preserves nutritional value, offer high production efficiency and promote health maintenance.



Marine fish feed - Bluefin tuna feed

Magokoro, Sea Diamond, Giant Tuna EP
These formulated feeds are used throughout the entire bluefin tuna farming process, from artificial hatching and the introduction of natural seedlings to the shipment of adult fish.



Freshwater fish feed - Itomeito

This paste feed is rich in essential nutrients crucial for growth, especially when feeding eel fry (glass eel). As the importance of each individual glass eel increases, our formulation design combines a practical approach focused on the group with a research-driven perspective on the individual, ensuring both high growth rates and excellent feed acceptance.



PIA Gold

PIA Gold is a nutritionally fortified feed containing newly developed natural plant polysaccharides, designed to mitigate stress during events such as juvenile migration and rainfall for marine juveniles, such as red seabream and yellowtail. It is used for marine juvenile seed production, offshore aquaculture, and related applications.



Our Businesses

Development of low-fishmeal and fishmeal-free feed

Due to global challenges such as population growth and the depletion of marine resources, the availability of fishmeal ingredients is declining. Resource management through fishing bans and catch limits has become essential. Our efforts focus on applying technology for the development of low- and fishmeal-free feeds using renewable, underutilized ingredients, aiming to support a sustainable aquaculture industry.



Yellowtail raised on low-fishmeal feed



Offshore fish cages of Fisheries and Aquaculture Research Laboratory

Coho salmon farming business

We import high-quality eyed eggs produced in Seattle, USA, and sell them to domestic freshwater seedling producers. We purchase top-quality seedlings raised in freshwater and sell them to offshore producers. In addition to regular feed sales and technical guidance, we contribute to the development of coho salmon farming through our involvement in the integrated production process.



Eyed eggs of coho salmon



Shipping of coho salmon

feed

Food business

With commitment to quality, we offer a wide range of egg products, from household to commercial use. In addition to egg products, we are also engaged in efforts to achieve recycling-oriented agriculture, including the development of compost brands made from livestock manure.



Food busi



Our Products

Smile Eggs

These safe and high-quality eggs bring smiles to your table.



Kyoto Vitamin Eggs

These eggs, rich in vitamin E, are produced in Kyoto and feature a gentle pink color.



Industrial used egg products
(Boxes & Shrink Packs)

We handle a variety of egg products, including industrial used egg products (boxes and shrink packs), liquid eggs, and frozen egg products, tailored to needs across the country.



Benihana Series

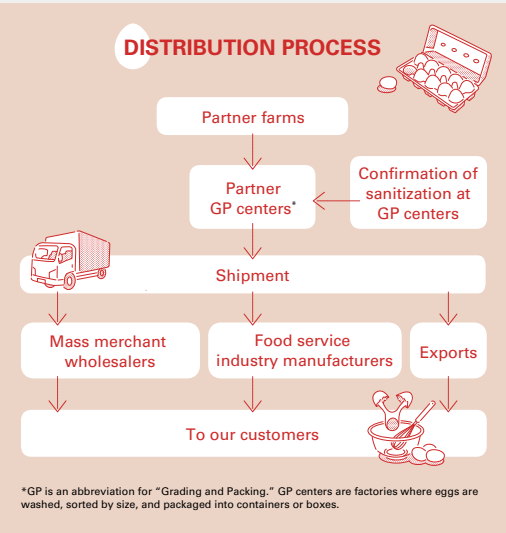
We design compost products made from livestock manure, such as cattle, pigs, and chickens, under the Marubeni Nisshin Feed brand, and sell them both domestically and internationally.



Our Businesses

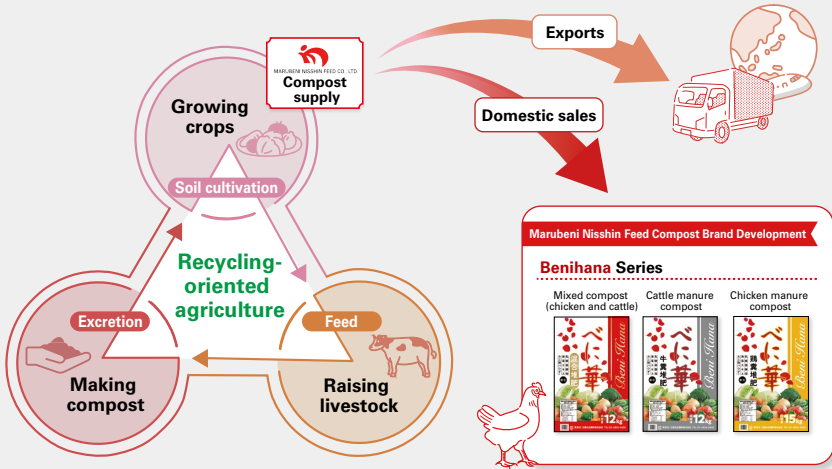
Egg Business – From the Earth to Your Table

In Japan, we have a unique food culture of consuming raw eggs, which is rare worldwide. This requires strict quality control. As a company involved in food production, we will continue to strengthen our efforts to ensure food safety and meet the expectations of our consumers.



Environmental Business

We aim to build a model for recycling-oriented agriculture by selling livestock manure compost. By using compost, we promote healthy and rich soil.



Technology development

We aim to contribute to our customers' management and profits through the development of innovative and competitive products and production programs, as well as providing extensive technical support to implement them.



Techno



Research and development institute

The research and development institute is made up of four development groups and an inspection group. The four development groups—focused on swine, cattle, layers, and broilers—conduct research on nutrition, physiology, raw materials, feed formulation, and product differentiation for each livestock species. Based on this research, they develop and improve feed and mixed products. The inspection group consists of a pathology team and a physico-chemical team. The pathology team performs disease testing on livestock and poultry as requested by customers, including health check-ups for livestock (such as the “System Pack”), and manages microbial contamination in our products. The physico-chemical team analyzes the nutritional components and harmful substances in compound feed and raw materials.



Fisheries Technology Institute

In August 2024, the Fisheries and Aquaculture Research Institute moved from Aichi Prefecture to Kagoshima Prefecture and was renamed the Fisheries Technology Institute. The laboratory has introduced cutting-edge facilities and equipment to support advanced feed development and has also set up both offshore and land-based aquaculture facilities. It conducts research on developing compound feed for every stage of aquaculture, from seed production to the finishing and shipping of fish like yellowtail, red sea bream, and bluefin tuna. In addition to developing feed for these species, the institute is actively conducting breeding trials for newly farmed fish species, both in Japan and abroad, and is focused on researching and developing new feed solutions for the future.



Our Proprietary Technologies

Herb technology

We were quick to embrace the concept of food as medicine by incorporating herbs into feed development. We harness the power of herbs to produce healthy and delicious livestock and aquaculture products. Herb technology is one of our areas of expertise, and we have obtained several patents in this field.



Young animal feed technology

We have been developing milk replacers for calves and prestarters for piglets using our unique manufacturing technologies, raw materials, and formulation expertise. Designed to ensure that piglets and calves eagerly eat and grow healthy and strong, our feed is carefully formulated with ingredients and nutrients that consider their nutritional needs, physiology, and palatability.



Supplemental Feed technology

Mixed products are similar to supplements in the food industry. Over many years of development, we have accumulated unique expertise in this field. We offer a wide range of products designed to meet various needs, including nutritional supplementation, stress management, breeding improvement, and livestock product differentiation, all tailored to our customers’ specific requirements.



Safety management system

Quality Assurance Declaration

At Marubeni Nisshin Feed, guided by the principle of “Food links into the future,” we contribute to ensuring food safety as a member of the food chain by manufacturing and supplying safe compound feed through our unique quality management system.



Feed Safety Policy

We consider feed safety to be the most important management priority and conduct our business activities based on the following:

1. As a feed manufacturer within the food chain, we prioritize the continuous production and supply of safer, higher-quality compound feed. We contribute to the development of domestic livestock and aquaculture producers, the health of consumers, and environmental considerations.
2. To ensure feed safety, we comply with all legal and regulatory requirements, including the Feed Safety Act, and follow Good Manufacturing Practice (GMP) guidelines. We continuously provide products and services that meet the advanced feed safety and security needs of our customers.
3. To provide accurate information about feed safety to our customers, we maintain close communication with stakeholders, including customers, raw material and supply sources, product recipients, and regulatory agencies. We proactively address various issues, collect and analyze complaint data, understand customer requirements, and work to improve product quality, service, and prevent recurrence.
4. From a business continuity planning (BCP) perspective, we also address emergency responses to natural disasters (such as typhoons, floods, and earthquakes), as well as fires and power outages.
5. To ensure the effective implementation of these safety policies, we conduct regular employee training to enhance staff capabilities and ensure the proper execution of public awareness campaigns for external communication.
6. To ensure the Feed Safety Management System (FeSMS) and FSSC function properly, we verify, analyze, and evaluate the entire management system and actual business operations as appropriate in accordance with the PDCA cycle, conducting management reviews and continuously improving the system.

Safety manager



We promote the maintenance and strengthening of production systems toward safety and security in all our feed mills nationwide.

ISO 22000 certification

Ensuring Food Safety with International Standards

On May 28, 2013, Marubeni Nisshin Feed became the first domestic compound feed manufacturer to obtain the ISO 22000 international standard for food safety management systems across the entire company.



Quality Assurance & Quality Control

Building Trust in Food Through Reliable Quality Management

As food safety becomes increasingly important, we are committed to contributing to food safety as part of our management philosophy. We have established a company-wide quality assurance system based on ISO 22000 to ensure the safety and reliability of our products.



By operating and managing a unified system across the company, we are able to address the increasing risks associated with the diversification and multi-origin sourcing of raw materials, as well as the growing focus on food safety. As a compound feed manufacturer that plays a key role in the food chain, Marubeni Nisshin Feed delivers safer, higher-quality feed to livestock and aquaculture operations and will continue to contribute to ensuring food safety in the future.



Each feed mill has a Quality Assurance section responsible for ensuring the quality of raw materials and products, as well as maintaining a reliable traceability system through the retention of samples and production records. In addition to quality control duties, the Quality Assurance section also plays a key role in promoting ISO standards, contributing to the maintenance and improvement of product quality from multiple perspectives.



Kagoshima feed mill



Bird net



Disinfection gate



Deodorizing equipment

Company Profile

Trade Name	: Marubeni Nisshin Feed Co., Ltd.	Major stockholders	: Marubeni Corporation
Established	: August 1, 1957		Nisshin Seifun Group Inc.
Capital	: 5.5 billion yen	Main financial institutions:	Mizuho Bank, Ltd. and others
Representative	: Representative Director and President Kazuhiro Miyauchi	Headquarters location	: 4F, Sakura Muromachi Building, 4-5-1 Nihonbashi-muromachi, Chuo-ku, Tokyo, 103-0022 JAPAN
Number of employees:	575 (as of April 2025)		Tel: +81-3-5201-3230
Fiscal year end	: March		

Description of business

Production and sale of compound feed for livestock and aquaculture

High-performance breeding pig business

Livestock and aquaculture products business

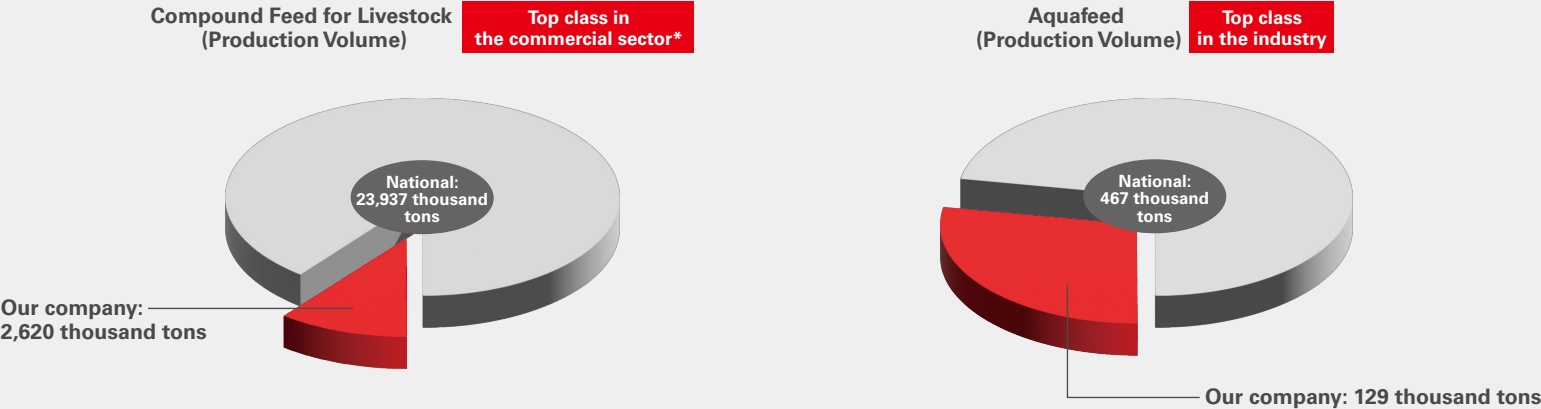
Livestock veterinary services

Egg Business

Environmental Business

Others

Marubeni Nisshin Feed’s market share (FY2023 compound feed volume)



*Commercial sector: Commercial feed manufacturers (excluding cooperative feed manufacturers)
(Note: National data for livestock feed is from the Ministry of Agriculture, Forestry and Fisheries, and for aquafeed, it is from the Japan Fish Feed Association statistics.)

List of business locations

	〒	Address	TEL	FAX
Headquarters				
	103-0022	4F Sakura Muromachi Bldg., 4-5-1 Nihombashi-muromachi, Chuo-ku, Tokyo	03-5201-3230	03-5201-1324
Livestock Feed Division				
Research and Development Institute				
	329-2763	1242-5 Iguchi, Nasushiobara City, Tochigi	0287-37-2111	0287-37-4506
Hokkaido Branch				
Livestock Feed Sales Section	047-0041	1-1-1 Temiya, Otaru City, Hokkaido	0134-34-2363	0134-22-5194
Ruminant Feed Sales Section	080-0010	6F Aoba Tokachi Building, 12-20 Oodori Minami, Obihiro City, Hokkaido	0155-27-0811	0155-27-0812
Otaru Feed Mill	047-0041	1-1-1 Temiya, Otaru City, Hokkaido	0134-23-7381	0134-33-3949
Northeast Honshu Branch				
Livestock Feed Sales Section	980-0021	9F JMF Building Sendai 01, 4-10-3 Chuo, Aoba-ku, Sendai City, Miyagi	022-217-9766	022-217-9776
Ruminant Feed Sales Section	031-0075	3FB N Building, 1-6-24 Uchimarui, Hachinohe City, Aomori	0178-73-5582	0178-45-3456
Eastern Honshu Branch				
Livestock Feed Sales Section	314-0103	2-5 Higashifukashiba, Kamisu City, Ibaraki	0299-92-4981	0299-92-4986
Ruminant Feed Sales Section	314-0103	2-5 Higashifukashiba, Kamisu City, Ibaraki	0299-92-4981	0299-92-4986
Kashima Feed Mill	314-0103	2-5 Higashifukashiba, Kamisu City, Ibaraki	0299-92-4991	0299-92-4482
Central Honshu Branch				
Livestock Feed Sales Section	447-0834	2-3 Tamatsura-machi, Hekinan City, Aichi	0566-42-2821	0566-42-2829
Ruminant Feed Sales Section	447-0834	2-3 Tamatsura-machi, Hekinan City, Aichi	0566-42-2821	0566-42-2829
Hekinan Feed Mill	447-0834	2-3 Tamatsura-machi, Hekinan City, Aichi	0566-42-4811	0566-48-4452
Chita Feed Mill	478-8501	12 Kitahama-machi, Chita City, Aichi	0562-32-4131	0562-33-0371
Western Honshu Branch				
Livestock Feed Sales Section	710-0057	6F Taketomi Building, 2-4-14 Showa, Kurashiki City, Okayama	086-442-8880	086-442-8884
Ruminant Feed Sales Section	710-0057	6F Taketomi Building, 2-4-14 Showa, Kurashiki City, Okayama	086-442-8880	086-442-8884
Kyushu Branch				
Livestock Feed Sales Section 1	891-0122	4-22 Nanei, Kagoshima City, Kagoshima	099-269-1661	099-268-8084
Livestock Feed Sales Section 2	812-0016	2F Kyushu Building, 1-8-31 Hakataeki Minami, Hakata-ku, Fukuoka City, Fukuoka	092-433-8210	092-433-8214
Ruminant Feed Sales Section 1	891-0122	4-22 Nanei, Kagoshima City, Kagoshima	099-269-1661	099-268-8084
Ruminant Feed Sales Section 2	812-0016	2F Kyushu Building, 1-8-31 Hakataeki Minami, Hakata-Ku, Fukuoka City, Fukuoka	092-433-8210	092-433-8214
Kagoshima Feed Mill	891-0122	4-22 Nanei, Kagoshima City, Kagoshima	099-269-1711	099-267-2044

	〒	Address	TEL	FAX
Aquafeed Division				
Fisheries Technology Institute				
	897-1301	14847-1 Kataura, Kasasa-cho, Minamisatsuma City, Kagoshima	0993-76-8899	0993-76-8896
Eastern Japan Aquafeed Sales Department				
Sales Section	980-0021	9F JMF Building Sendai 01, 4-10-3 Chuo, Aoba-ku, Sendai City, Miyagi	022-217-0567	022-217-0577
Central Japan Aquafeed Sales Department				
Sales Section	478-8501	12 Kitahama-machi, Chita City, Aichi	0562-39-2200	0562-32-3796
Chita Aquafeed Mill	478-8501	12 Kitahama-machi, Chita City, Aichi	0562-32-4131	0562-33-0371
Western Japan Aquafeed Sales Department				
Sales Section	798-0087	381-130 Sakashidu kou, Uwajima City, Ehime	0895-68-0210	0895-24-5395
Kyushu Aquafeed Sales Department				
Sales Section	891-0122	4-22 Nanei, Kagoshima City, Kagoshima	099-269-1661	099-268-8084
Kagoshima Aquafeed Mill	891-0122	4-22 Nanei, Kagoshima City, Kagoshima	099-269-1711	099-267-2044
Foods Division				
Food Sales Department				
East Japan Sales Section Business Development Section	103-0022	4F Sakura Muromachi Bldg., 4-5-1 Nihombashi-muromachi, Chuo-ku, Tokyo	03-6848-7310	03-6854-0009
East Japan Sales Section Shimotsuma Office	304-0063	2F Kyoei Building, 1-77 Onoko-cho, Shimotsuma-shi, Ibaraki	0296-30-7701	0296-30-7704
West Japan Sales Section	650-0032	6F Taijuseimei Kobe Sannomiya Building, 119 Ito-machi, Chuo-ku, Kobe-shi, Hyogo	078-325-1650	078-325-1655
Kyushu Sales Section	820-0040	4F I-town Building, 6-1 Yoshihara-machi, Iizuka-shi, Fukuoka	0948-43-4330	0948-43-4345
Joint Venture (JV) Feed Mills				
ShinHokkaido Feeds Manufacturing Co., Ltd.	059-1373	35-21 Masago-cho, Tomakomai City, Hokkaido	0144-56-0331	0144-56-0337
Tokachi Feed Co., Ltd.	089-2605	6-5-3 Kaisho-mae, Hiroo Town, Hiroo-gun, Hokkaido	01558-2-0301	01558-2-0302
Michinoku Feed Co., Ltd.	039-1161	24-9 Kawaragi kaigan, Hachinohe City, Aomori	0178-21-3353	0178-29-1300
Kamaishi Feed Co., Ltd.	026-0011	2-1-1 Minato-machi, Kamaishi City, Iwate	0193-22-6161	0193-22-6160
Nihon Milk Replacer Co., Ltd.	314-0103	2-14 Higashifukashiba, Kamisu City, Ibaraki	0299-93-4277	0299-93-4281
Japan Feed Co., Ltd.	314-0103	2-11 Higashifukashiba, Kamisu City, Ibaraki	0299-93-1611	0299-93-1618
Makiba Feed Co., Ltd.	314-0103	2-12 Higashifukashiba, Kamisu City, Ibaraki	0299-93-1511	0299-93-1518
Nishi-Nihon Feed Co., Ltd.	712-8071	3-6-3 Mizushima Kaigan-dori, Kurashiki City, Okayama	086-444-2400	086-444-2300
Yatsushiro Feed Co., Ltd.	866-0034	3-9-14 Shin-minato-machi, Yatsushiro City, Kumamoto	0965-37-3650	0965-37-3431
Affiliates				
Marubeni Nisshin Feed Technology (Tianjin) Co., Ltd.		BuildingA1, 1 Shengda 1st Branch Road, Xiqing Economic-Technological Development Area, 300383Tianjin, China	+86-22-5832-1920	
MN Farm Co., Ltd.	103-0022	4F Sakura Muromachi Bldg., 4-5-1 Nihonbashi- Muromachi, Chuo-ku, Tokyo	03-5201-3291	03-5201-1324
PIQUA GENETICS Co., Ltd.	103-0022	4F Sakura Muromachi Bldg., 4-5-1 Nihonbashi- Muromachi, Chuo-ku, Tokyo	03-5201-3290	03-5201-1325
Nakanihon Taiyo Feed Co., Ltd.	478-8501	12 Kitahama-machi, Chita City, Aichi	0562-32-0811	0562-32-3796
Kihoku Farm Co., Ltd.	899-8512	545 Suwabara, Kihoku-cho, Kanoya City, Kagoshima	099-485-1700	099-485-1561
Iwate Seiryu Farm Co., Ltd.	029-2501	94-143 Shinden, Kamiarisu, Sumita Town, Kesen-gun, Iwate	0192-48-3251	0192-48-3010



4F Sakura Muromachi Building 4-5-1 Nihonbashi-Muromachi,
Chuo-ku, Tokyo, 103-0022 JAPAN



< Visit our website for more details.
<https://www.mn-feed.com/>